

LM2716 Evaluation Board

National Semiconductor
Application Note 1339
Clinton Jensen
July 2004

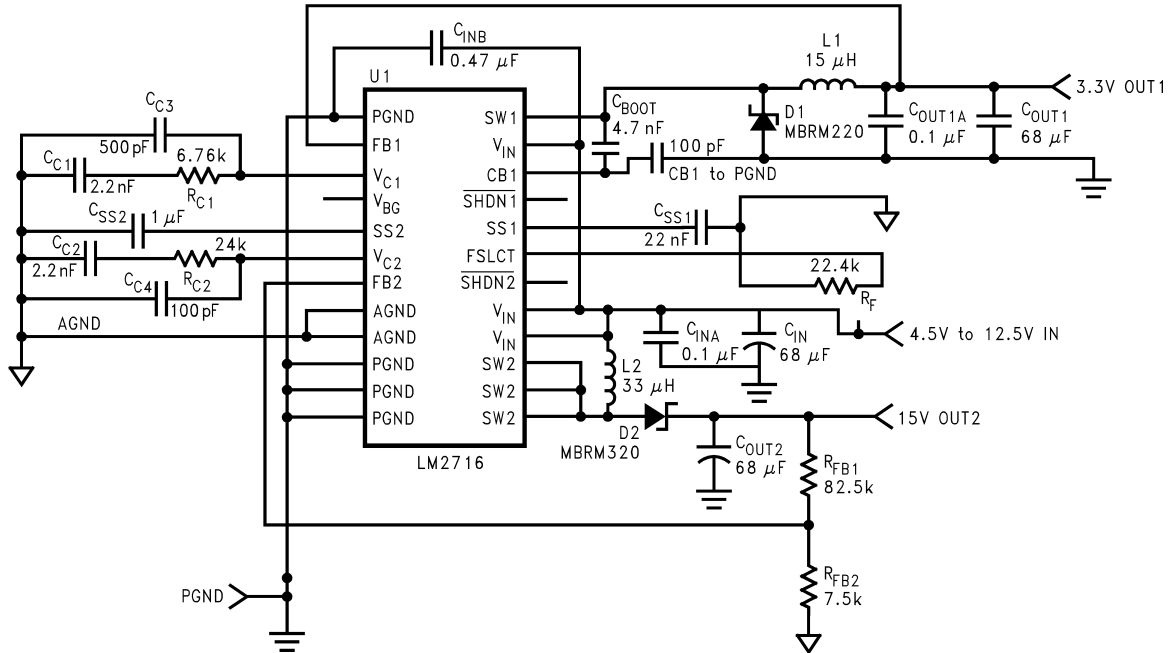


Introduction

The LM2716 is composed of two high current PWM DC/DC converters. The buck (step-down) converter provides a fixed 3.3V output at up to 1.6A. The boost (step-up) converter contains a 3.6A switch and is adjustable up to 20V output. The LM2716 evaluation board is designed for 3.3V output at up to 1.6A and 15V output with an input voltage range of

4.5V to 12.5V. The 15V output is capable of supplying approximately 800mA at 5V input and approximately 2A at 12V input. The board is ideally set up for TFT display power applications or any other application requiring 3.3V and 15V. The 15V output may be changed to fit other applications as desired. The schematic, layout, and bill of materials used follows:

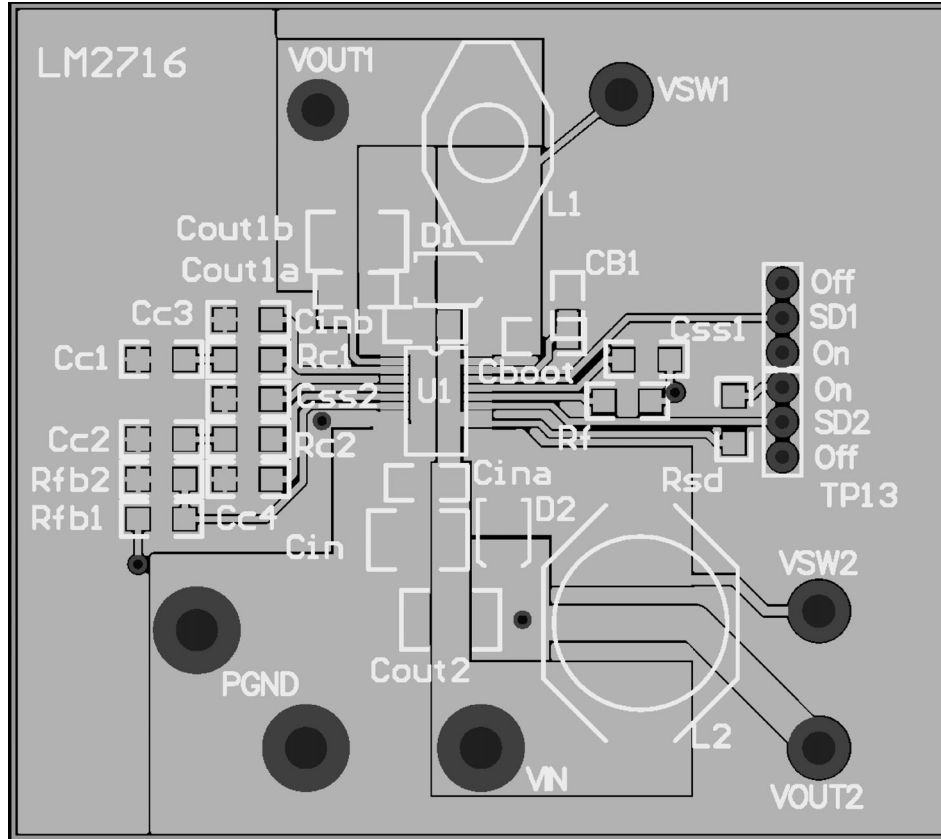
Schematic and Layout



Schematic

20113101

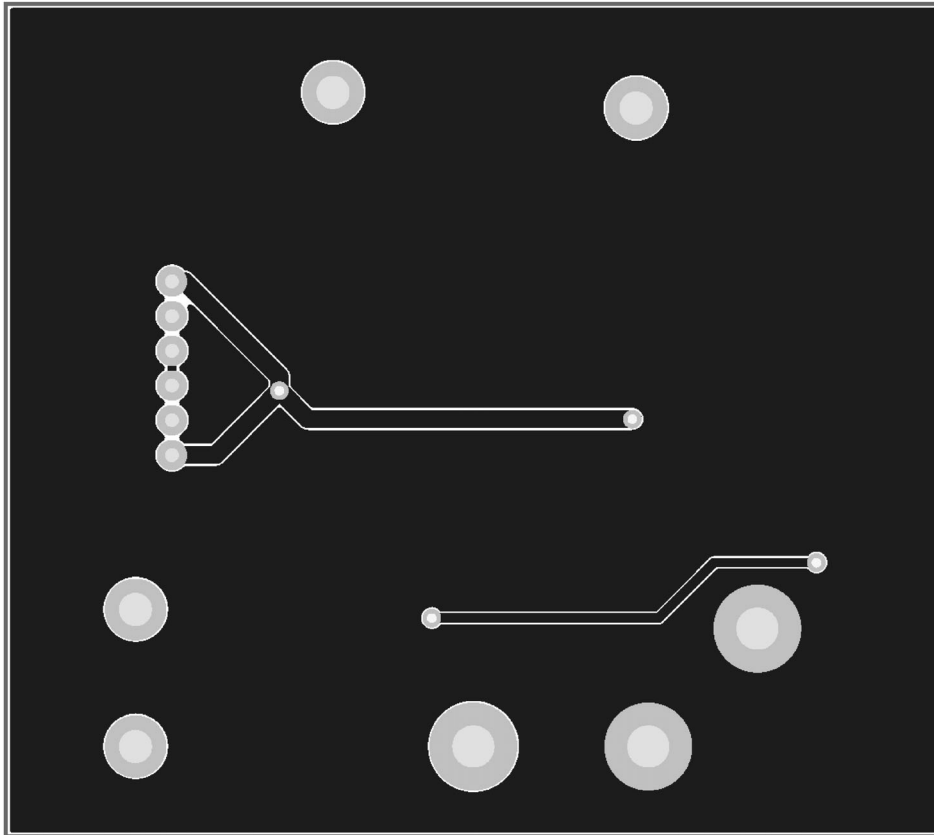
Schematic and Layout (Continued)



Layout, Top Layer

20113102

Schematic and Layout (Continued)



Layout, Bottom Layer

20113103

Bill of Materials

Designator	Component	Manufacturer
U1	LM2716MT-ADJ, TSSOP-24	National Semiconductor
L1	15 μ H, DO3316P-153	Coilcraft
L2	33 μ H, DO5022P-333	Coilcraft
C_{IN} , C_{OUT2}	68 μ F, 20V Tantalum, 293D686X9020D	Vishay
C_{INA} , C_{OUT1A}	0.1 μ F, Ceramic, VJ1206Y104KXX	Vishay
C_{INB}	0.47 μ F Ceramic, VJ1206Y474KXX	Vishay
C_{OUT1B}	68 μ F, 10V Tantalum, 293D686X9010D	Vishay
D1, D2	2A, 40V Schottky, MBRS240LT	On Semiconductor
C_{SS1}	22 nF, 1206 Case, VJ1206Y223KXA	Vishay
C_{SS2}	1 μ F, Ceramic, VJ1206Y105KXJ	Vishay
C_{BOOT}	4.7 nF, 1206 Case, VJ1206Y472KXA	Vishay
C_{C1} , C_{C2}	2.2 nF, 1206 Case, VJ1206Y222KXA	Vishay
C_{C3}	470 pF, 1206 Case, VJ1206A471KXA	Vishay
C_{C4} , CB1 (Only required for inputs higher than 10V)	100 pF, 1206 Case, VJ1206A101KXA	Vishay
R_{C1}	6.81k, 1206 Case, CRCW12066811F	Vishay
R_{C2}	24k, 1206 Case, CRCW12062402F	Vishay
R_F	22.6k, 1206 Case, CRCW12062262F	Vishay
Rsd	150k, 1206 Case, CRCW12061503F	Vishay
R_{FB1}	82.5k, 1206 Case, CRCW12068252F	Vishay
R_{FB2}	7.5k, 1206 Case, CRCW12067501F	Vishay

Bill of Materials (Continued)

Designator	Component	Manufacturer
Test Posts (7)	160-1026-02-01-00	Cambion

LIFE SUPPORT POLICY

NATIONAL'S PRODUCTS ARE NOT AUTHORIZED FOR USE AS CRITICAL COMPONENTS IN LIFE SUPPORT DEVICES OR SYSTEMS WITHOUT THE EXPRESS WRITTEN APPROVAL OF THE PRESIDENT AND GENERAL COUNSEL OF NATIONAL SEMICONDUCTOR CORPORATION. As used herein:

1. Life support devices or systems are devices or systems which, (a) are intended for surgical implant into the body, or (b) support or sustain life, and whose failure to perform when properly used in accordance with instructions for use provided in the labeling, can be reasonably expected to result in a significant injury to the user.
2. A critical component is any component of a life support device or system whose failure to perform can be reasonably expected to cause the failure of the life support device or system, or to affect its safety or effectiveness.

BANNED SUBSTANCE COMPLIANCE

National Semiconductor certifies that the products and packing materials meet the provisions of the Customer Products Stewardship Specification (CSP-9-111C2) and the Banned Substances and Materials of Interest Specification (CSP-9-111S2) and contain no "Banned Substances" as defined in CSP-9-111S2.



National Semiconductor
Americas Customer
Support Center
Email: new.feedback@nsc.com
Tel: 1-800-272-9959

www.national.com

National Semiconductor
Europe Customer Support Center
Fax: +49 (0) 180-530 85 86
Email: europe.support@nsc.com
Deutsch Tel: +49 (0) 69 9508 6208
English Tel: +44 (0) 870 24 0 2171
Français Tel: +33 (0) 1 41 91 8790

National Semiconductor
Asia Pacific Customer
Support Center
Email: ap.support@nsc.com

National Semiconductor
Japan Customer Support Center
Fax: 81-3-5639-7507
Email: jpn.feedback@nsc.com
Tel: 81-3-5639-7560